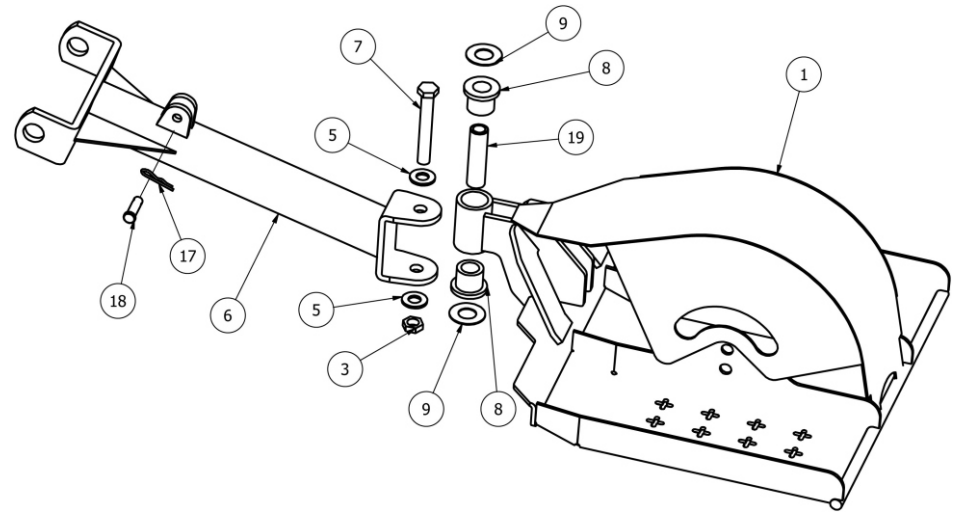


Safety Warnings

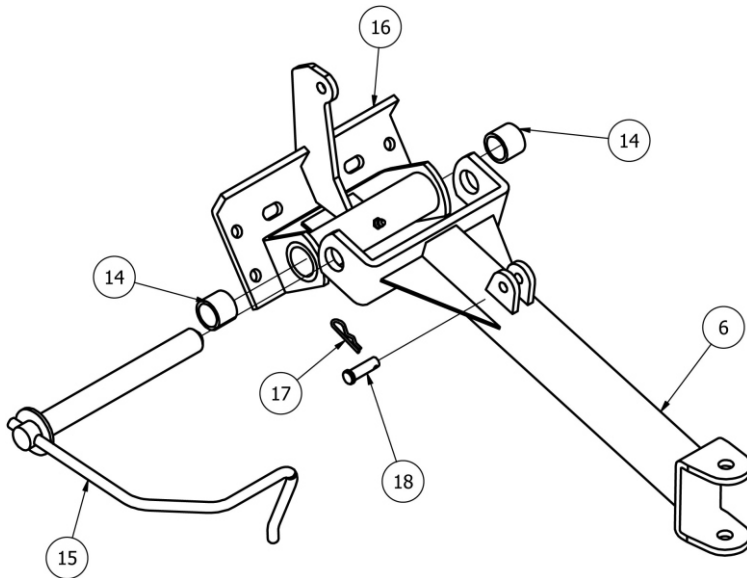
Before using your 1 RUNNER Sulky:

- 1) Read, understand and follow all mower manufacturer's operation and safety instructions. You should be completely familiar with all safety controls and how to safely start and stop your mower. Know the location and function of all operator presence controls that automatically shut the mower off when you release the handles.**
- 2) Use equipment at slow speeds until you become completely familiar with both the mower and sulky.**
- 3) Check the area before mowing with sulky. Be aware of any holes, drop-offs, , tree limbs rocks branches etc... as the sulky swings, turns and moves up and down over the terrain.**
- 4) Never carry passengers.**
- 5) Do not operate sulky under the influence of drugs or alcohol.**
- 6) Wear sturdy, rough soled shoes. Never operate or use sulky in bare feet or sandals.**
- 7) Mowing or using sulky on slope requires additional caution.**
- 8) Use slow speeds. Do not make sudden changes in speed or direction. Quick acceleration or braking could cause the mower to lift, shift sideways or slide, which may result in injury.**
- 9) Avoid starting or stopping on hillsides.**
- 10) Do not turn on slopes.**
- 11) Do not use sulky on wet grass.**
- 12) Use extra care when loading and unloading mower from trailer. DO NOT RIDE SULKY WHEN LOADING OR UNLOADING.**



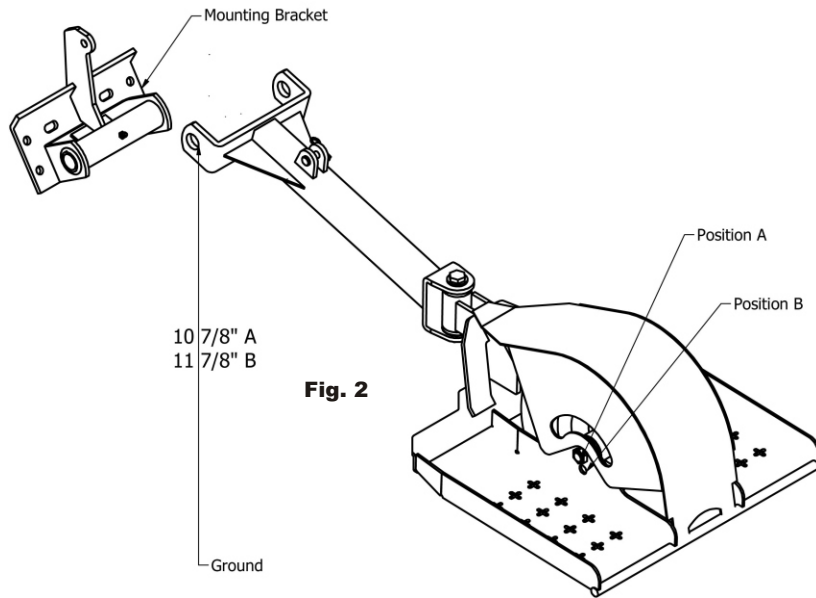
Tow Arm Assembly (Sulky Side)

- 1) Place pivot tube spanner (15) into pivot tube. Spanner will protrude slightly on top and bottom.
- 2) Insert pivot tube spacers(5) on top and bottom of spanner.
- 3) Install Tow Arm tube assembly making sure angle of arm will face upward toward rear of mower and insert Pivot bolt (4) using Pivot washers (14) and Jam nut (8).
- 4) Tighten Pivot Bolt until Tow arm clevis is securely drawn to Pivot spanner. Be careful not to pinch Pivot Tube Spacer between Clevis and Spanner.

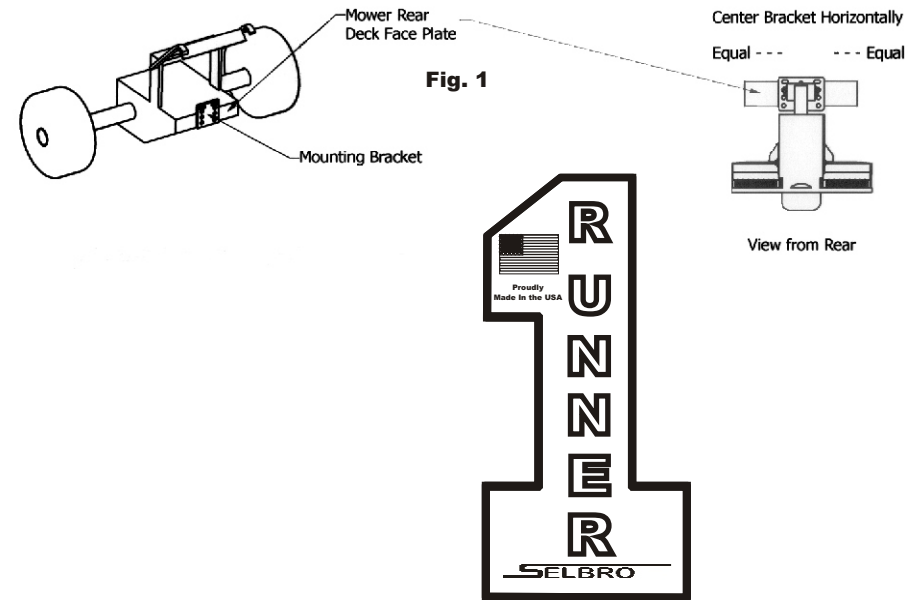


SELBRO Bellevue, Ohio 44811

Bracket Installation Guidelines



Reference Only

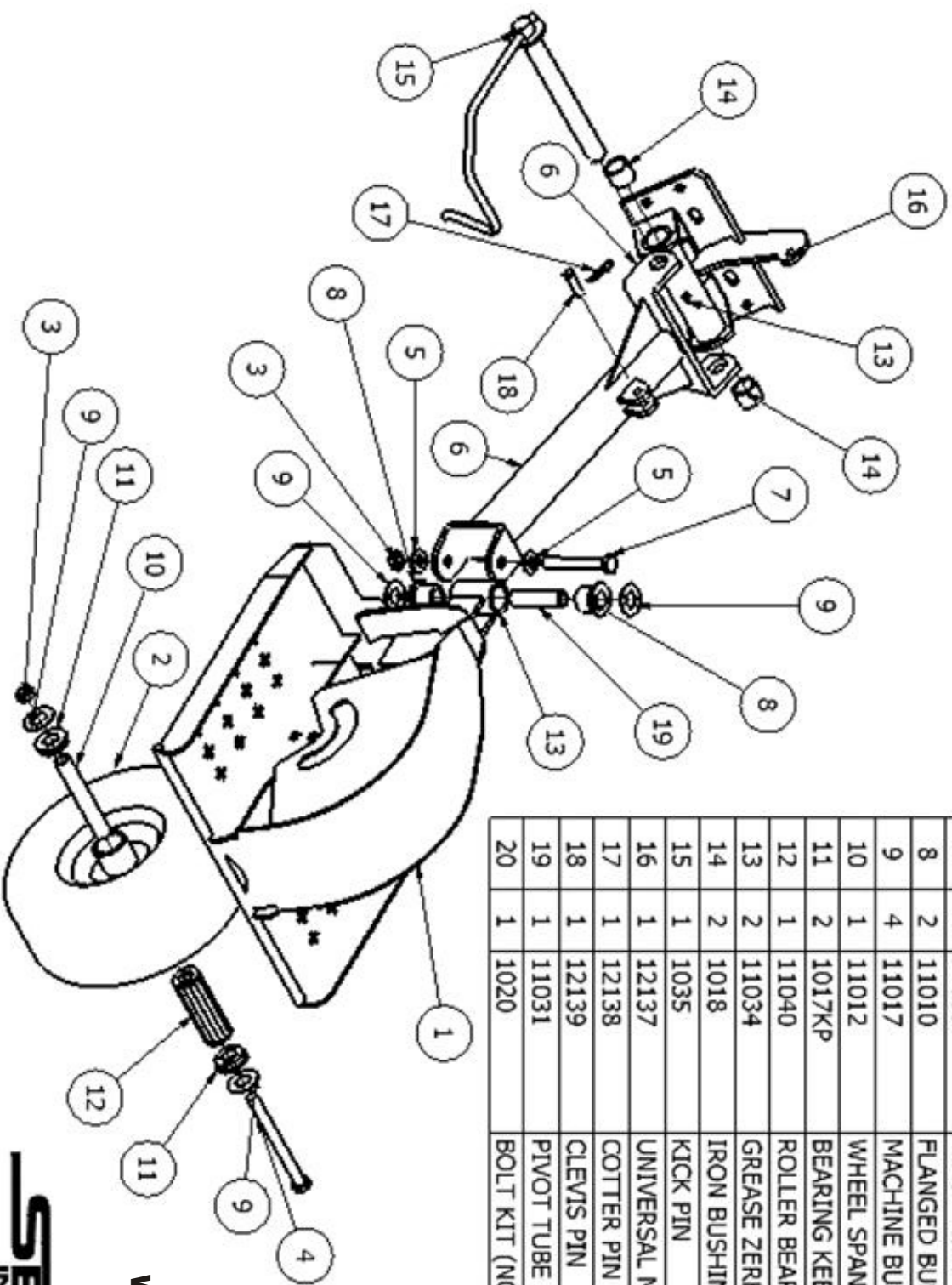


- 1) Disengage mower PTO, make sure engine is off - Remove the ignition key to avoid accidental starting
- 2) As illustrated in Fig. 1, the mounting bracket is designed to mount on the mower rear deck faceplate.

- ✎ Bracket must be centered horizontally on the mower's rear deck faceplate
- ✎ The bracket pivot pin vertical dimension should be maintained at:
approximately 10 7/8" position (A) and 11 7/8" position (B) - Fig. 2
- ✎ Clamp the bracket to the rear deck faceplate, make sure the bracket is aligned both horizontally and vertically
- ✎ Check Sulky deck platform for level, adjust as necessary.
- ✎ With mounting bracket securely clamped in place, mark and drill holes using a 3/8" drill bit. (Check behind deck faceplate for any obstructions, i.e.; Belts, pulleys, hoses, etc...)
- ✎ Securely bolt the bracket in place using the hardware supplied. It is suggested all 4 bolts be used to secure the mounting bracket. Bolts may be faced outward as necessary.

WWW.SELBRO.COM

SELBRO Bellevue, Ohio 44811



ITEM	QTY	PART NUMBER	DESCRIPTION
1	1	11050	COMPLETE DECK ASSEMBLY
2	1	11041	WHEEL ASSEMBLY
3	2	11036	JAM NUT
4	1	11037	AXLE BOLT
5	2	11033	PIVOT WASHER
6	1	11051	TOW ARM ASSEMBLY
7	1	11035	PIVOT BOLT
8	2	11010	FLANGED BUSHING
9	4	11017	MACHINE BUSHING
10	1	11012	WHEEL SPANNER
11	2	1017KP	BEARING KEEPER
12	1	11040	ROLLER BEARING
13	2	11034	GREASE ZERK
14	2	1018	IRON BUSHING
15	1	1035	KICK PIN
16	1	12137	UNIVERSAL MOUNTING BRACKET ASSEMBLY
17	1	12138	COTTER PIN
18	1	12139	CLEVIS PIN
19	1	11031	PIVOT TUBE SPANNER
20	1	1020	BOLT KIT (NOT SHOWN)

#11054

WWW.SELBRO.COM

SELBRO
INCORPORATED